

Wright and Morten and Fletcher and Co

Edward Hayes BVetMed DBR MRCVS
Wright and Morten Veterinary Surgeons
The Barn
Holly Tree Farm
Lower Withington
Macclesfield
Cheshire
SK11 9DT
edwardhayeswm@gmail.com
08458 330034
07791 549199



Phil Asbury
Fletcher and Co LLP
Clive Hall Farm
Clive Lane
Winsford
Cheshire
CW7 3NX
phil@grasslandsolutions.co.uk



Dairy Monitor Farm

Open Discussion Meeting –14th June 2011

- *Control of lameness*
- *Investigation of current lameness prevalence and measures to reduce this prevalence*

- *Ed Hayes*
 - *Wright and Morten Vets*
 - *XL Vets*

- *Phil Asbury*
 - *Fletcher and Co*

Clive Hall Farm

- Cheshire Dairy Monitor Farm
 - Part of Livestock Northwest RDPE Northwest Livestock Programme
 - Pleased to work on committee steering this interesting and important initiative
 - Adding ideas and techniques to the work Fletcher and Co and Wright and Morten have put in at Clive Hall over recent years
- A 210 cow spring calving herd
 - Calving February to April
 - Inseminating May to July
 - Maximising milk from grass and minimising costs
 - Part of group of farms under same overall management and sharing same objectives

Attempts to improve health and production

- **What are we trying to improve**
- Review of last years performance
- Things we are going to measure
- Things we must do in the coming months

Reduce the number of lame cows



Reduce the number of lame cows



Reduce the number of lame cows



Reduce the number of lame cows



Why?

- Better welfare for the cows
- Lame cows eat less and therefore produce less
- Lame cows are less likely to get in calf and more likely to be culled

Normal cow flow at Clive Hall

- Out of parlour
- Turn right and go through footbath?
- Either take left turn to main grazing block
- Or right turn down hill and over bridge to smaller grazing block

Attempts to improve health and production

- What are we trying to improve
- **Review of last years performance**
- Things we are going to measure
- Things we must do in the coming months

Attempts to improve health and production

- What are we trying to improve
- Review of last years performance
- **Things we are going to measure**
- Things we must do in the coming months

What does this tell us?

- Infectious foot disease is not under sufficient control
- There are significant issues with mechanical causes of lameness

Why has this happened?

- We are not footbathing effectively!
- Poor growth of horn has not been stopped by regular preventative trimming resulting in foot imbalances
- These feet are more likely to be at risk of significant foot disease if subjected to any deficiencies in the walking surfaces

What have we done to identify problems

- Walked the routes the cows walk to look for problems and discussed solutions

Attempts to improve health and production

- What are we trying to improve
- Review of last years performance
- Things we are going to measure
- **Things we must do in the coming months**

Footbathing

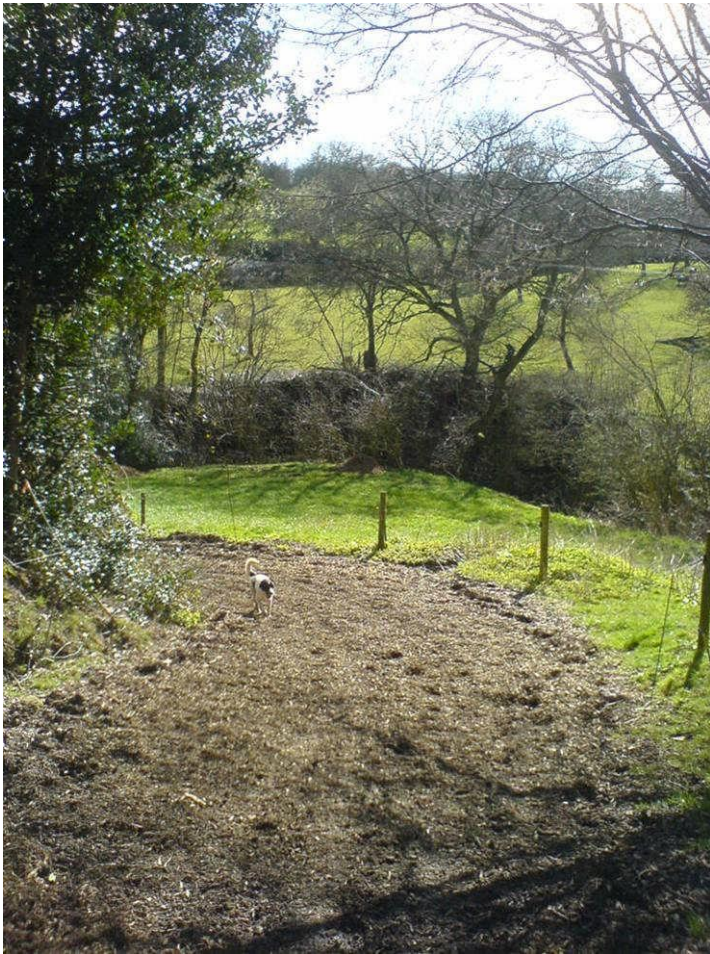


- Products used
- How often?
- Requirements of the footbath

Sharp turns

- Increase white line separation?
- Cause poor wearing?

Poor track surfaces



- Section through wood to little used paddock
- Wood chip?

Steep bits of track interrupting cow flow



Steep bits of track interrupting cow flow



Weak bits of existing tracks



Routine foot trimming

- Which cows?
- How often?



FINAL THOUGHTS

- 1. Footbath regularly
- 2. Improve tracks and gateways
- 3. Routine foot trimming yearly
- 4. Attend to lame cows promptly
- 5. Assess progress using mobility scoring

Thank you for your attention!

- Please feel free to ask any questions

Wright and Morten and Fletcher and Co

Edward Hayes BVetMed DBR MRCVS
Wright and Morten Veterinary Surgeons
The Barn
Holly Tree Farm
Lower Withington
Macclesfield
Cheshire
SK11 9DT
edwardhayeswm@gmail.com
08458 330034
07791 549199



Phil Asbury
Fletcher and Co LLP
Clive Hall Farm
Clive Lane
Winsford
Cheshire
CW7 3NX
phil@grasslandsolutions.co.uk

